

# Norfolk Constabulary

## Police and Crime Panel

Simon Bailey QPM  
Chief Constable  
2<sup>nd</sup> February 2016



**NORFOLK**  
CONSTABULARY

*Our Priority is You*



# PCC Police and Crime Plan – Strategic Objectives

The PCC's priorities remain unchanged and are set out in the 2015/16 Police and Crime Plan. They are:-

- Reducing priority crime, anti-social behaviour and reoffending
- Reducing vulnerability, promoting equality and supporting victims
- Reducing the need for service, through preventative and restorative approaches and more joined up working with partners; protecting the availability of front line resources

***Our Priority is You***



# Financial Savings

- In the period April 2010 to March 2016 Norfolk Police has saved £25m
- £13m in collaboration with Suffolk
- £12m is Norfolk only, and mainly local policing

*Our Priority is You*



# Workforce Strength

Total	March 2010	December 2015	Reduction
Police Officers	1,649	1,522	-127
PCSOs	275	169	-106
Staff	1,120	1,005	-115
<b>Total</b>	<b>3,044</b>	<b>2,697</b>	<b>-348</b>

*Our Priority is You*



# Workforce Profile

By Rank	March 2010	December 2015	Reduction
Chief Superintendent	7	4	-3
Superintendent	15	13	-2
Chief Inspector / Inspector	119	95	-24
Sergeant	295	270	-25
Constable	1,209	1,136	-73
<b>Total</b>	<b>1,645</b>	<b>1,518</b>	<b>-127</b>

*Our Priority is You*



- Norfolk Constabulary is an exceptionally high performing force
- We are recognised by HMIC as one of the best performing forces in England and Wales
- We have one of the most advanced collaborations in England and Wales
- Norfolk is at the forefront of innovation and evidence based policing

***Our Priority is You***



# Our Operating Environment

- Regional Collaboration
- The Preferred Partnership
- Local Service Delivery

*Our Priority is You*



**HIGHEST PRIORITY THREATS**

Child Sexual Exploitation and Abuse

Domestic Abuse

Sexual Offending

Terrorism

Trafficking

Violent Crime

**HIGHEST PRIORITY DEMANDS**

999s

Anti-social Behaviour

Missing Persons

Nighttime Economy

Road Safety





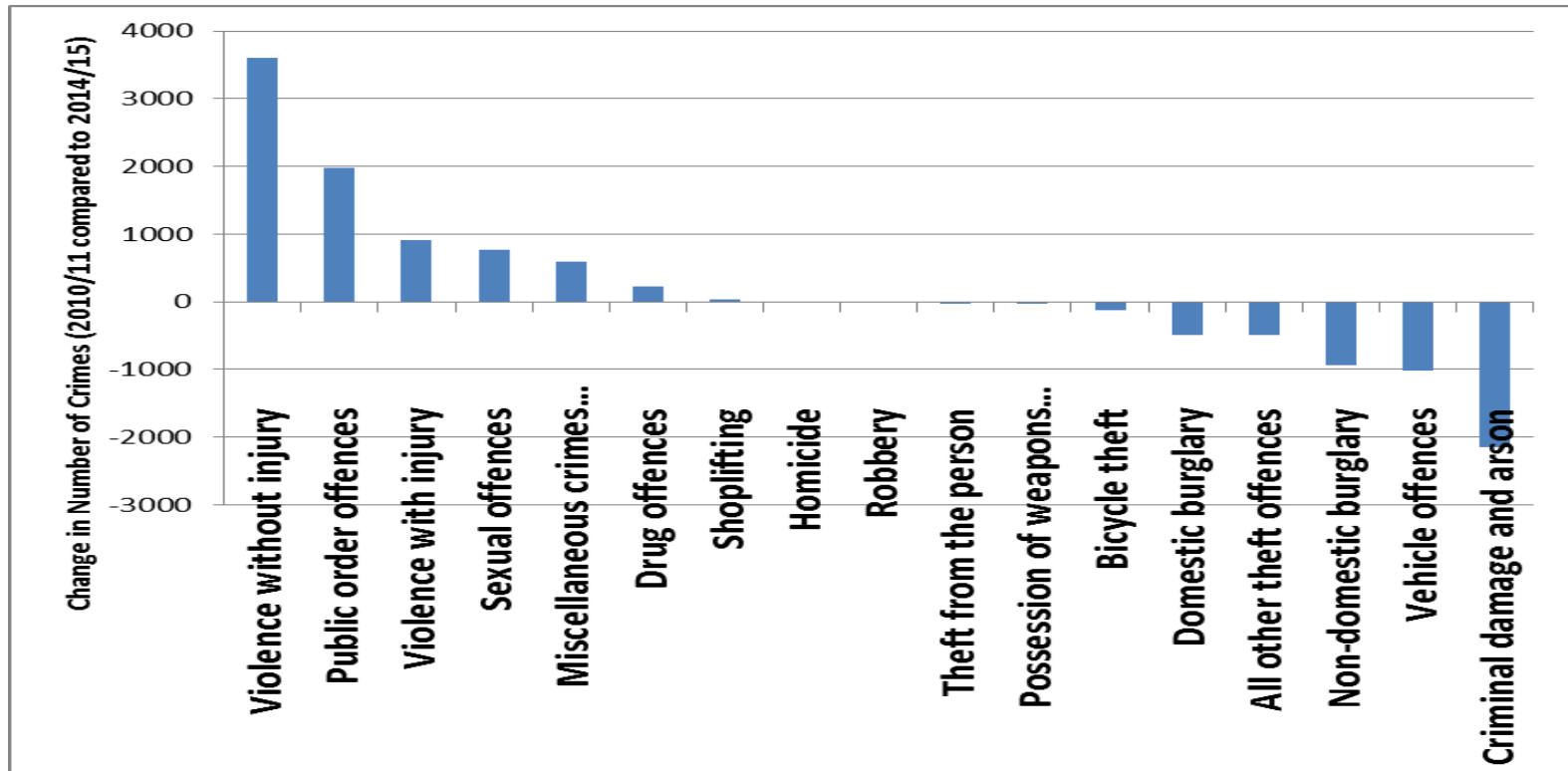
## Changing CAD demand

Demand type	2010/11		2015		Change
	Year	Daily	Year	Daily	
999 Calls	91478	251	86590	237	-5%
101 Calls	259776	712	263486	722	+1%
ASB	53862	148	16298	45	-70%
Crime	35799	98	39489	108	+10%
Road related	27236	75	28683	79	+5%
Public safety	73659	202	89093	244	<b>+21%</b>
Concern for safety	14533	40	16860	46	<b>+16%</b>
Domestic Incident	9709	27	20252	55	<b>+108%</b>
Missing Persons	3026	8	4135	11	<b>+37%</b>
<b>CADS attended</b>	<b>152838</b>	<b>418</b>	<b>130587</b>	<b>358</b>	<b>-15%</b>

*Our Priority is You*



# Change in Crime (2010/11 compared to 2014/15):



*Our Priority is You*



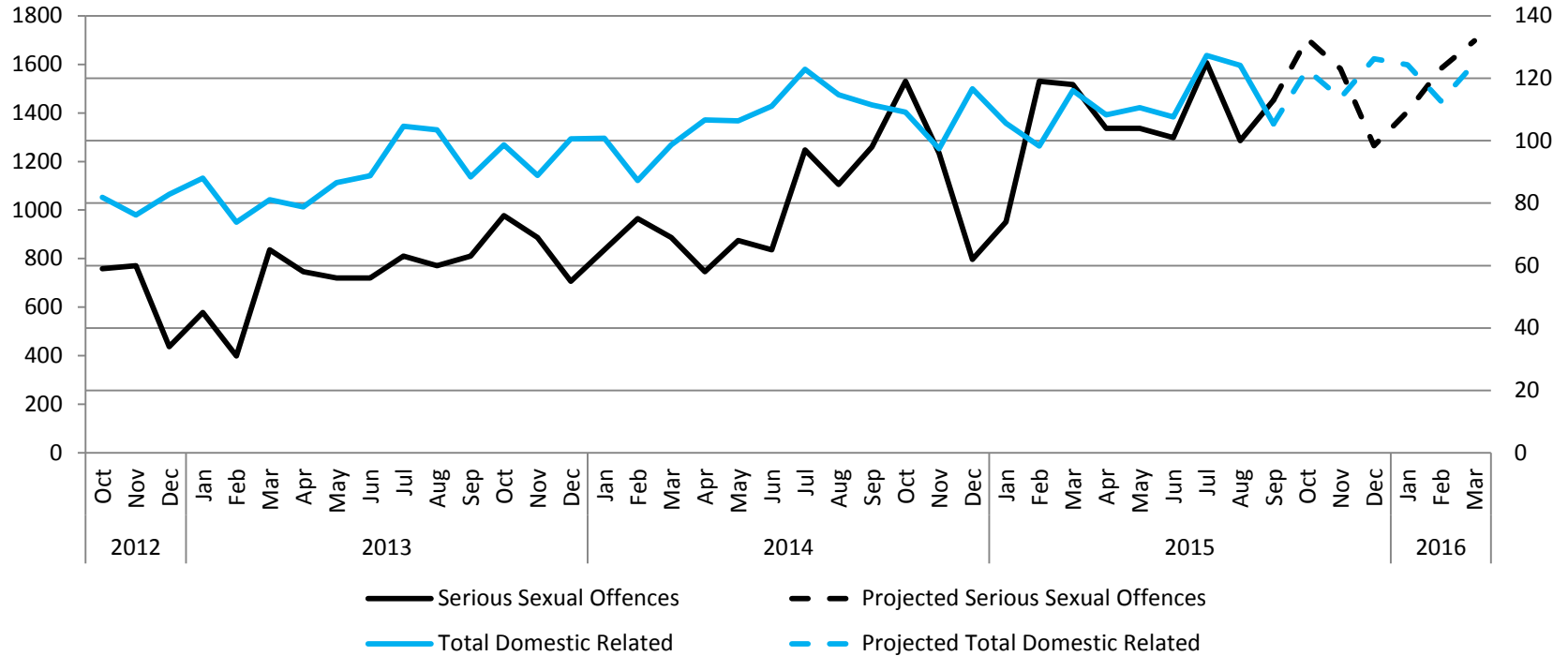
# Vulnerable People

*Our Priority is You*



# Vulnerability Related Crime

## Serious Sexual Offences and Domestic Abuse (01/10/2012 - 30/09/2015)



*Our Priority is You*



# Adult Abuse Investigation

- Population Change – Ageing population of Norfolk (in the last decade +23% aged 65 & over).
- Workloads – Increasing demand for service (approx. 35 investigations per month)
  - 29% increase in crimes indicated against ‘vulnerable adults’ in past 12 months
  - 13% increase in crimes against over 70s in past 12 months

***Our Priority is You***



# Rape & Serious Sexual Offences

	Rape Offences
1 April 2015 - 1 February 2016	412
1 April 2014 - 1 February 2015	282
1 April 2013 - 1 February 2014	237

**46% increase** in rape reporting since 1st February 2015 and a **74% increase** since 1st February 2014

Other serious sexual offences: 1 April 2015 – 01 Feb 2016 (1108 offences)

**35% increase** in SSO compared to last year to date

*Our Priority is You*



# Public Protection

*Our Priority is You*





# Registered Sex Offenders & MAPP nominals

Year	RSOs in the Community	MAPP Cases
	December 2015	
2013	761	87
2014	834	79
2015	898	86

*Our Priority is You*



# Domestic Abuse

*Our Priority is You*



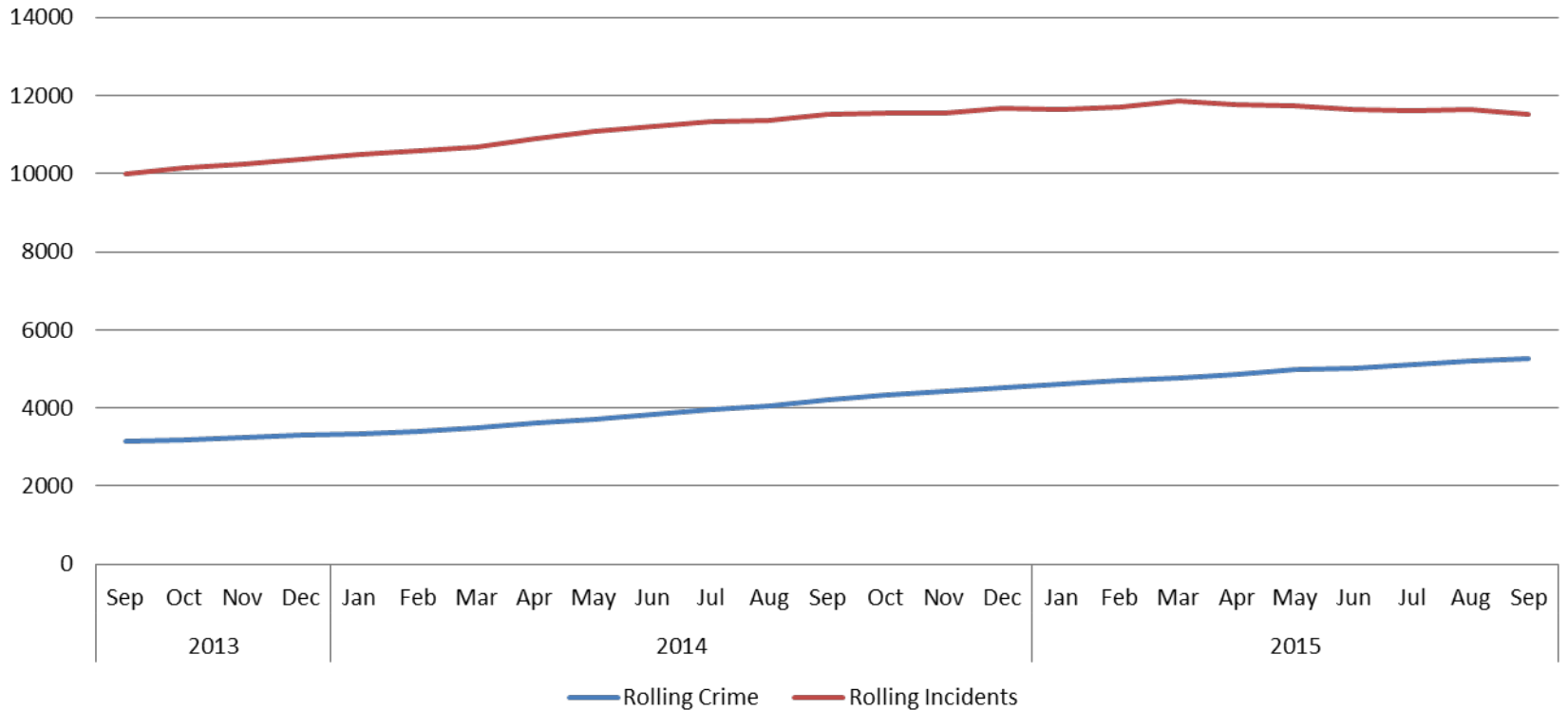
**999 Call to Norfolk Police from a 9 year old boy whose upstairs in his bedroom hiding with his 7 year old sister.**



***Our Priority is You***



# Domestic Abuse



**67% increase in domestic abuse reports since 2013**

*Our Priority is You*



# Honour Based Abuse

*Our Priority is You*



# Honour Based Abuse

Number of referrals:

2013 = 4

2014 = 20

**2015 = 32**

Mandatory reporting of FGM introduced  
October 2015 – impact on referral numbers  
anticipated

*Our Priority is You*

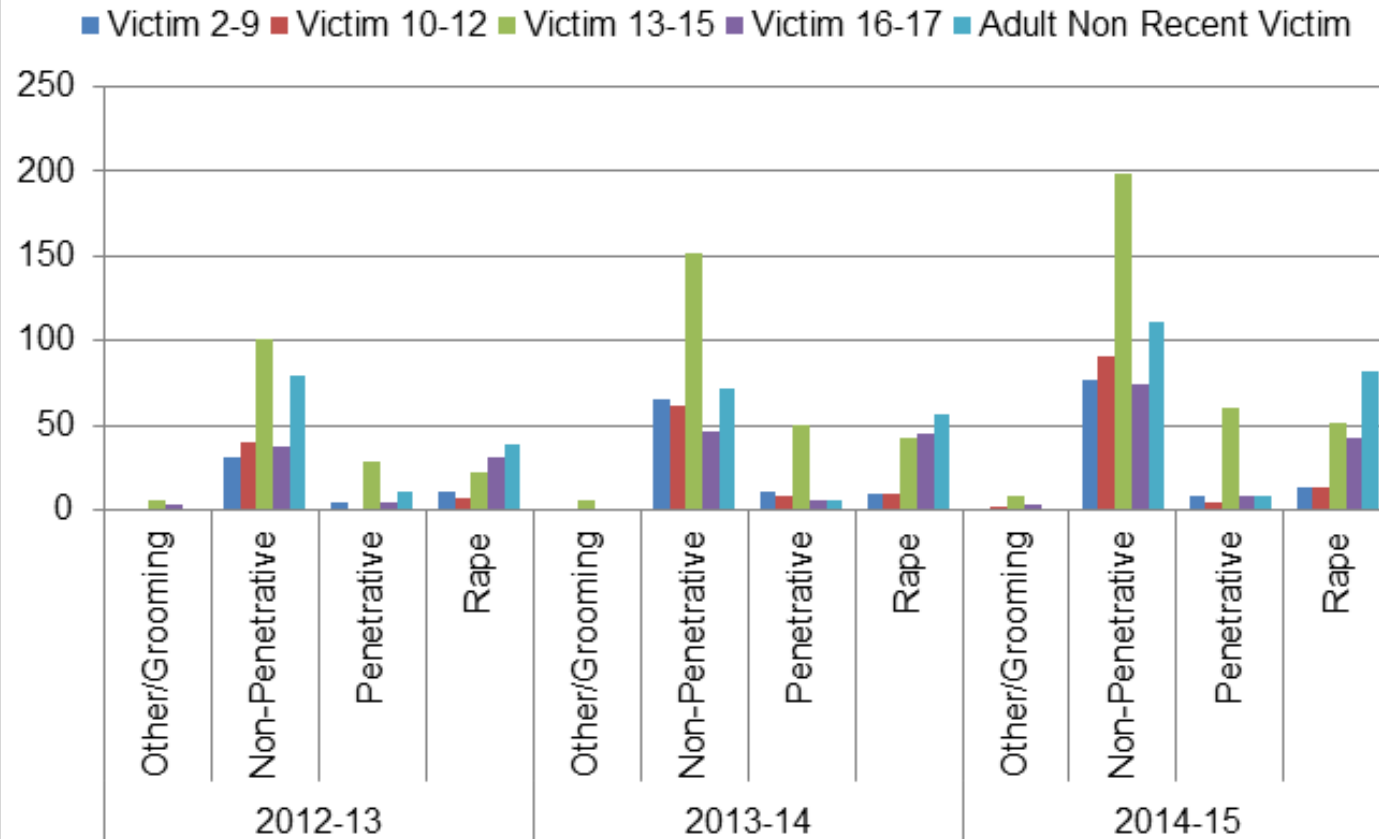


# Safeguarding our Children

*Our Priority is You*



## Child Sexual Abuse Crime Recording by Year (Norfolk Constabulary)



*Our Priority is You*





# Child Abuse Investigation

## National / local context

- 11.3% of young adults aged 18 – 24 have experienced contact sexual abuse during childhood<sup>1</sup>
- We can expect **18,883** of Norfolk's 167,114 children to be the victim of contact sexual abuse during their childhood<sup>2</sup>
- Only 1 in 8 of victims currently come to the attention of statutory agencies<sup>3</sup>

## Ongoing challenges

- ABE, Intermediaries & Better Case Management - will require investment in time and resources to met these national requirements.
- Substantial demand increase - 32 DC FTE in CAIU currently have 414 cases (avg. 13 cases each), an increase of **19%** since last year.

***Our Priority is You***



# Schools Based Incidents & Interventions

Incident Type	Number Recorded			
	Oct 11 – Jul 12	Sep 12 – Jul 13	Sep 13 – Jul 14	Sep 14 – Jul 15
Attendance	94	152	274	267
Behaviour	676	1022	1283	1200
Safeguarding	197	447	784	905
Other	112	514	849	934
	<b>1079</b>	<b>2135</b>	<b>3190</b>	<b>3306</b>

Plus 375 Sexting Reports since September 2014

*Our Priority is You*



# Child Sexual Exploitation

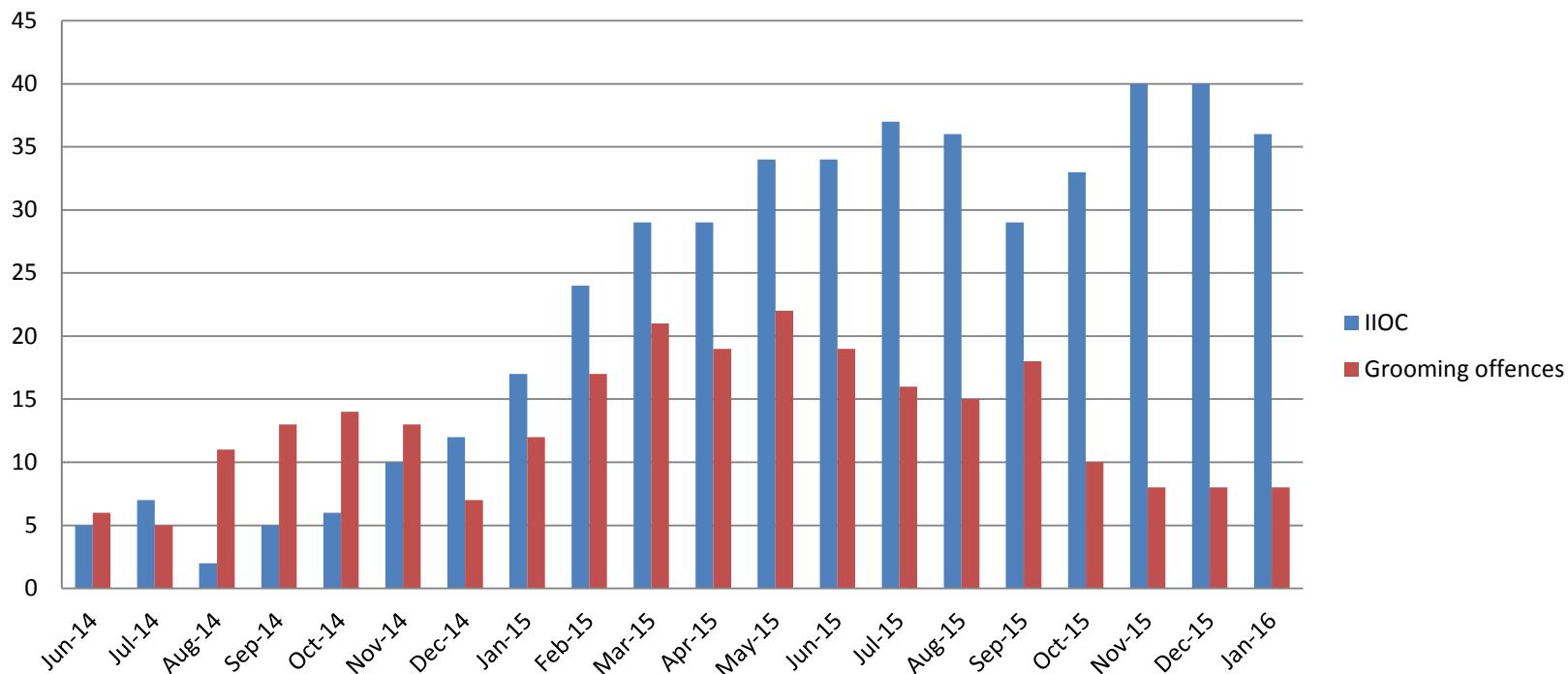
- Live CSE cases – 158
- Average of 84 referrals per month in 2014, 124 in 2015 : 33% increase
- 272% increase in CSE related crime since 2014

*Our Priority is You*



# Safeguarding Children Online

Number of referrals or packages bring developed (Cumulative totals)



*Our Priority is You*



# The Challenge

- The changing face of crime
- The complexity of new demands
- Managing expectations
- Balancing the budget

*Our Priority is You*



# Thank you

[www.norfolk.police.uk](http://www.norfolk.police.uk)



**NORFOLK**  
CONSTABULARY

*Our Priority is You*

